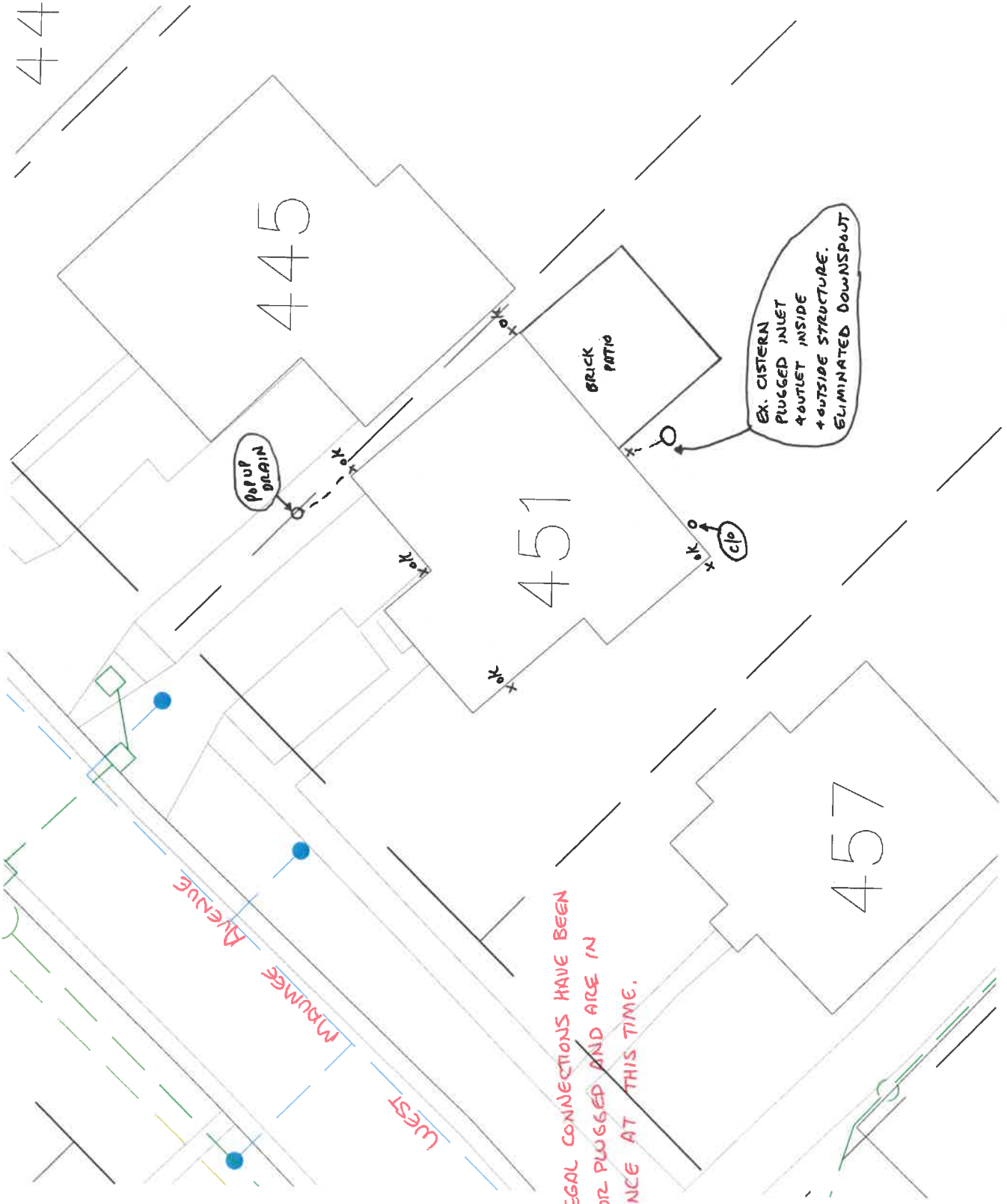


451 WEST MAUMEE AVENUE
ILLEGAL DOWNSPOUT INVESTIGATION

INSPECTED BY: MARK SPIESS

2016
N
1"=20'



ALL ILLEGAL CONNECTIONS HAVE BEEN
CAPPED OR PLUGGED AND ARE IN
COMPLIANCE AT THIS TIME.